

STATE OF FLORIDA  
COUNTY OF PALM BEACH  
This Plat was filed for record at  
M. this day of 19  
and duly recorded in Plat Book No.  
on Page  
John B. Dunkle, Clerk Circuit Court  
By

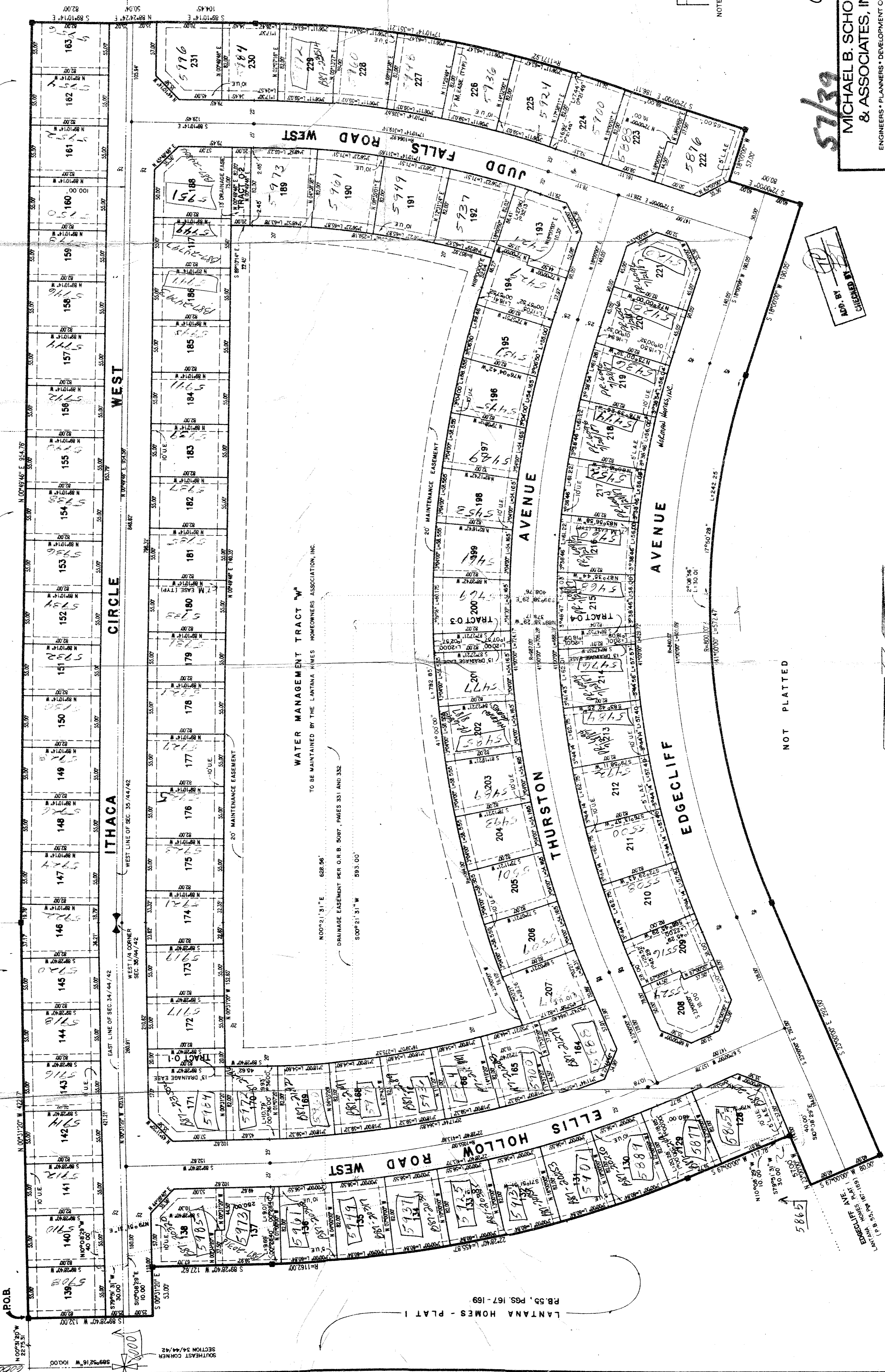
# LANTANA HOMES PLAT 2

A PLANNED UNIT DEVELOPMENT  
PALM BEACH COUNTY, FLORIDA  
JULY, 1987  
SHEET 2 OF 2

HOMES OF LEE'S CROSSING PLAT 4  
P.B. 48, PGS. 142-148

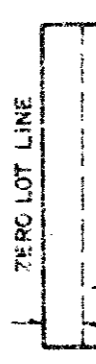
HOMES OF LEE'S CROSSING PLAT 7  
P.B. 50, PGS. 132 & 133

HOMES OF LEE'S CROSSING  
PLAT 6  
P.B. 52, PGS. 65-67



NOT PLATTED

Plat 84-41



NOTE: ALL LOTS HAVE A 7' MAINTENANCE EASEMENT SHOWN THUS

TURNOUT REQUIRED

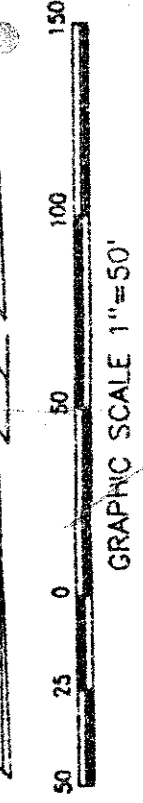
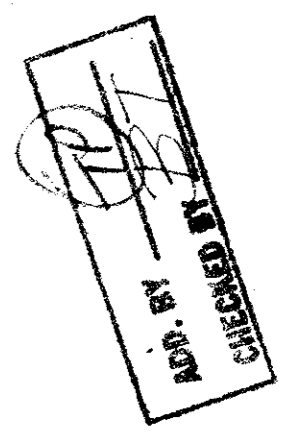
09/21/002

57/39

MICHAEL B. SCHORAH & ASSOCIATES, INC.  
ENGINEERS - PLANNERS - DEVELOPMENT CONSULTANTS

TEL (305) 988-0080  
1850 FOREST HILL BLVD., SUITE 205  
WEST PALM BEACH, FLORIDA 33406

LANTANA HOMES PLAT 2



GRAPHIC SCALE 1"=50'

NOT PLATTED

SUBDIVISION: Lantana Homes  
BOOK: 57  
PAGE: 39  
FLOOD ZONE: B  
QUAD: 39  
SE: 33403  
PLAT: Plat 2  
TAN 249

DRAWING NUMBER  
57/39

DRAWING NUMBER

DRAWING NUMBER

DRAWING NUMBER

PLAN HOLD CORPORATION • RINNE, CALIFORNIA

PLAN HOLD CORPORATION • RINNE, CALIFORNIA

PLAN HOLD CORPORATION • RINNE, CALIFORNIA

PLAN HOLD CORPORATION • RINNE, CALIFORNIA